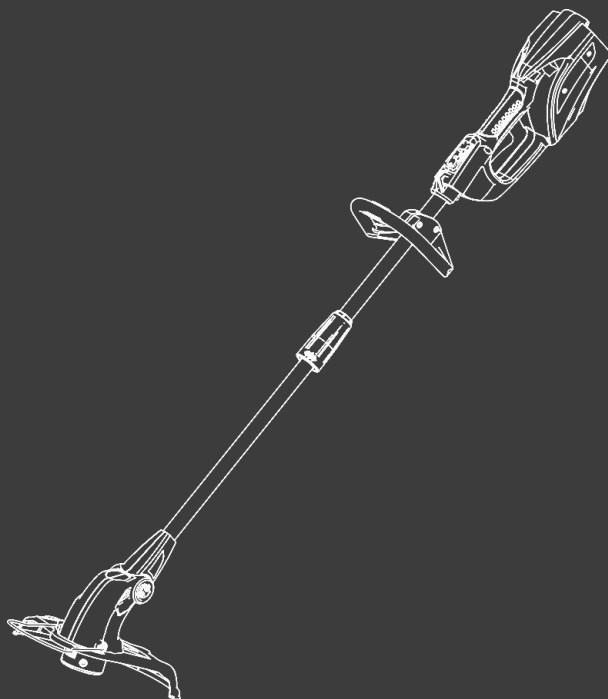


**HYUNDAI**  
POWER PRODUCTS

# **CORDLESS LAWN TRIMMER HCBEN40V-A**

## **ORIGINAL INSTRUCTIONS**



**WARNING:** Read thoroughly the instruction manual before use.

**IMPORTANT**  
**READ CAREFULLY BEFORE USE**  
**KEEP FOR FUTURE REFERENCE**

## **Safe operating practices**

### **Training**

- a) Read the instructions carefully. Be familiar with the controls and the correct use of the machine.
- b) Never allow children or people unfamiliar with these instructions to use the machine. Local regulations can restrict the age of the operator.
- c) Keep in mind that the operator or user is responsible for accidents or hazards occurring to other people or their property.

### **Preparation**

- a) Before use, always visually inspect the machine for damaged, missing or misplaced guards or shields.
- b) Never operate the machine while people, especially **children**, or pets are nearby.

### **Operation**

- a) Wear eye protection and stout shoes at all times while operating the machine.
- b) Avoid using the machine in bad weather conditions especially when there is a risk of lightning.
- c) Use the machine only in daylight or good artificial light.
- d) Never operate the machine with damaged guards or shields or without guards or shields in place.



- e) Switch on the motor only when the hands and feet are away from the **cutting means**.
- f) Always disconnect the machine from the power supply (i.e. remove the plug from the mains, remove the disabling device or removable battery)
  - 1) Whenever the machine is left unattended;
  - 2) Before clearing a blockage;
  - 3) Before checking, cleaning or working on the machine;
  - 4) After striking a foreign object;
  - 5) Whenever the machine starts vibrating abnormally.
- h) Take care against injury to feet and hands from the **cutting means**.
- i) Always ensure that the ventilation openings are kept clear of debris.

### **Maintenance and storage**

- a) Disconnect the machine from the power supply (i.e. remove the plug from the mains, remove the disabling device or removable battery) before carrying out maintenance or cleaning work.
- b) Use only the manufacturer's recommended replacement parts and accessories.
- c) Inspect and maintain the machine regularly. Have the machine repaired only by an authorized repairer.
- d) When not in use, store the machine out of the reach of **children**.

- never allow **children**, persons with reduced physical, sensory or mental capabilities or lack of experience and knowledge or people unfamiliar with these instructions to use the machine, local regulations may restrict the age of the operator;



- Never operate the machine while people, especially **children**, or pets are nearby. Keep them at least 15 m away from the machine during its operation.
- Stop using the tool when a risk might occur (people are nearby, dangerous material on the working area, problem with the tool, etc.). Check the working area before working and stay in alert when operating the tool.
- Follow the provided instructions for assembly, use, repairs, maintenance and storage
- Never replace the non-metallic **cutting means** with metallic **cutting means**;
- Do not overreach and keep the balance at all times, to always be sure of the footing on slopes and to walk, never run.
- Do not touch moving hazardous parts before the machine is stopped and the moving hazardous parts have come to a complete stop;
- Always wear substantial footwear and long trousers while operating the machine;
- This appliance is not intended for use by persons (including children) with reduced physical, sensory or mental capabilities, or lack of experience and knowledge, unless they have been given supervision or instruction concerning use of the appliance by a person responsible for their safety.
- Children should be supervised to ensure that they do not play with the appliance.
- Stay alert, watch what you are doing and use common sense when operating a power tool. Do not use a power tool while you are tired or under the influence of drugs, alcohol or medication. A moment of inattention



while operating power tools may result in serious personal injury.

- Use personal protective equipment. Always wear eye protection. Protective equipment such as dust mask, non-skid safety shoes, hard hat, or hearing protection used for appropriate conditions will reduce personal injuries.
- Prevent unintentional starting. Ensure the switch is in the off-position before connecting the battery pack, picking up or carrying the tool.
- A moving cutting attachment can cause severe injury. Maintain proper control of the machine with both hands until the cutting attachment has completely stopped rotating.
- Replace any cutting attachment that has been damaged. Always make sure that the cutting attachment is installed correctly and securely fastened before each use.
- Use only accessories recommended by manufacturer. Non-recommended accessories can cause injuries and accidents. Contact your dealer or our service agent.
- Always use the harness provided when operating the tool.
- Do not expose the tool to rain and humidity.
- In case of abnormal vibrations, stop immediately to use the tool and remove the battery; check if all screws are firmly tighten, if the cutting mean are correctly assembled. In case of doubt, bring the tool to our agent service for inspection.
- Always start the tool safely, tools correctly and fully assembled, foot and body far from the cutting means, harness installed and used.



- Always inspect the tool before and after the operation for signs of damage such as cracks in the cutting attachment or ageing. In case of damages or ageing, bring the tool to our agent service for inspection and reparation.
- Check the tool for loose fasteners. Tighten safely loose fasteners.
- Never operate the machine with defective guards or shields, or without safety devices.
- Always use the tool with the battery fully charged. Before use, check the charge level and charge the battery if necessary.
- In case of accident or breakdown, stop immediately the tool and remove the battery. Check the breakdown or accident, repair the tool if necessary. Bring the tool to a service agent if necessary.
- Do not replace the blade with metal multi-piece pivoting chains and flail blades; this type of blade must not be used with this tool.
- Stop the machine and allow it to cool before storing or transporting. Do not store or transport the machine with batteries fitted, remove and secure separately
- Clean all foreign material from the product. Store it in a cool dry and well-ventilated place that is inaccessible to children. Keep away from corrosive agents such as garden chemicals and de-icing salts. Do not store outdoors.
- For transportation, secure the machine against movement or falling to prevent injury to persons or damage to the machine.
- Use only original manufacturer's replacement parts, accessories and attachments. Failure to do so can



cause possible injury, poor performance and may void your warranty. You may make adjustments and repairs described here. For other repairs, contact the authorized service agent.

- Contact your dealer or manufacturer to know which parts/accessories can be used with this tool.
- Before any maintenance or adjustment, stop the tool and remove the battery.
- After extending new cutter line or cleaning, always return the product to its normal operating position before starting.
- After each use, clean the product with a soft dry cloth.
- Check all nuts, bolts and screws at frequent intervals for proper tightness to ensure the product is in safe working condition. Any part that is damaged should be properly repaired or replaced by an authorized service centre.

## **RESIDUAL RISK**

Even when the product is used as prescribed, it is still impossible to completely eliminate certain residual risk factors. The following hazards may arise in use and the operator should pay special attention to avoid the following:

- Injury caused by vibration. Always use the right tool for the job, use designated handles and restrict working time and exposure.
- Exposure to noise can cause hearing injury. Wear ear protection and limit exposure
- Kickback can occur when using the brushcutter. Ensure proper control by using both hands on the designated



handles. Read and follow the directions elsewhere in this manual to help reduce the risk of kickback.

- Injuries may be caused, or aggravated, by prolonged use of a tool. When using any tool for prolonged periods, ensure you take regular breaks.

## **RISK REDUCTION**

It has been reported that vibrations from hand-held tools may contribute to a condition called Raynaud's Syndrome in certain individuals. Symptoms may include tingling, numbness and blanching of the fingers, usually apparent upon exposure to cold. Hereditary factors, exposure to cold and dampness, diet, smoking and work practices are all thought to contribute to the development of these symptoms. There are measures that can be taken by the operator to possibly reduce the effects of vibration:

Keep your body warm in cold weather. When operating the unit wear gloves to keep the hands and wrists warm. It is reported that cold weather is a major factor contributing to Raynaud's Syndrome.

After each period of operation, exercise to increase blood circulation.

Take frequent work breaks. Limit the amount of exposure per day. If you experience any of the symptoms of this condition, immediately discontinue use and see your doctor about these symptoms.





## **INTENDED USE**

The product is only intended for use outdoors. For safety reasons the product must be adequately controlled by using two handed operation.

The product is intended for cutting long grass, pulpy weed, or brush and similar vegetation at or about ground level. The cutting plane should be approximately parallel to the ground surface. The product should not be used to trim hedges, bushes or other vegetation where the cutting plane is not parallel to the ground surface.

## **MAINTENANCE**

Servicing requires extreme care and knowledge. For service we suggest you return the product to your nearest authorized service center for repair. When servicing, use only identical replacement parts.

Use only original manufacturer's replacement parts, accessories and attachments. Failure to do so can cause possible injury, poor performance and may void your warranty.

You may make adjustments and repairs described here. For other repairs, contact the authorized service agent.

Before any maintenance or adjustment, disable the machine by removing the power source.



After extending new cutter line or cleaning, checking the blade, always return the product to its normal operating position before starting.

After each use, clean the product with a soft dry cloth.

Check all nuts, bolts and screws at frequent intervals for proper tightness to ensure the product is in safe working condition. Any part that is damaged should be properly repaired or replaced by an authorized service center.

## **TRANSPORTATION AND STORAGE**

Stop the machine and allow it to cool before storing or transporting. Do not store or transport the machine with batteries fitted, remove and secure separately

Clean all foreign material from the product. Store it in a cool dry and well-ventilated place that is inaccessible to children. Keep away from corrosive agents such as garden chemicals and de-icing salts. Do not store outdoors.

For transportation, secure the machine against movement or falling to prevent injury to persons or damage to the machine.

Injuries may be caused, or aggravated, by prolonged use of a tool. When using any tool for prolonged periods, ensure you take regular breaks.



## SYMBOLS ON THE PRODUCT



Safety alert



Read and understand all instructions before operating the product, follow all warnings and safety instructions.



Wear eye, ear and head protection.



Wear non-slip safety footwear when using the product.



Wear non-slip, heavy duty gloves.



Wear ocular protection



Wear hearing protection



Do not expose to rain or damp condition.





This unit is not intended for use with a toothed saw type blade.



Beware of thrown or flying object. Keep all bystanders a safe distance away from the product.



Beware of thrown or flying object. Keep all bystanders, especially children and pets, at least 15m away from the operating area



Beware of blade thrust



Guarantee sound power level

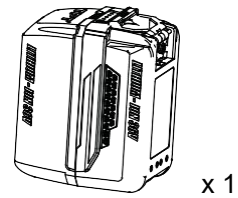
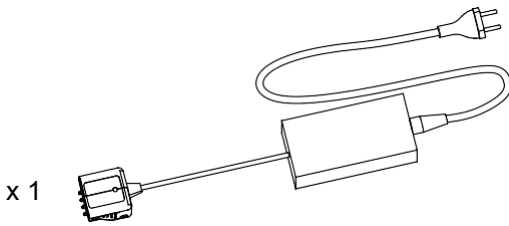
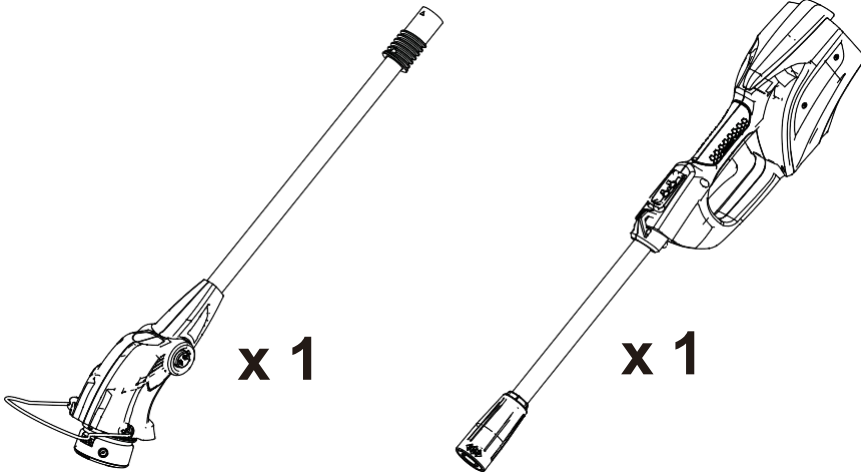
## **DESCRIPTION**

See on page 11

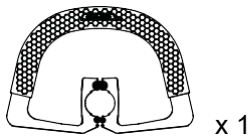
1. Trigger
2. Lock level
3. Two speed button
4. Handle
5. Connector
6. Cutter guard
7. Rotate button
8. Wire
9. Carter of protection
10. Battery pack (no provided)
11. Battery level
12. Charger (no provided)



# DELIVERY



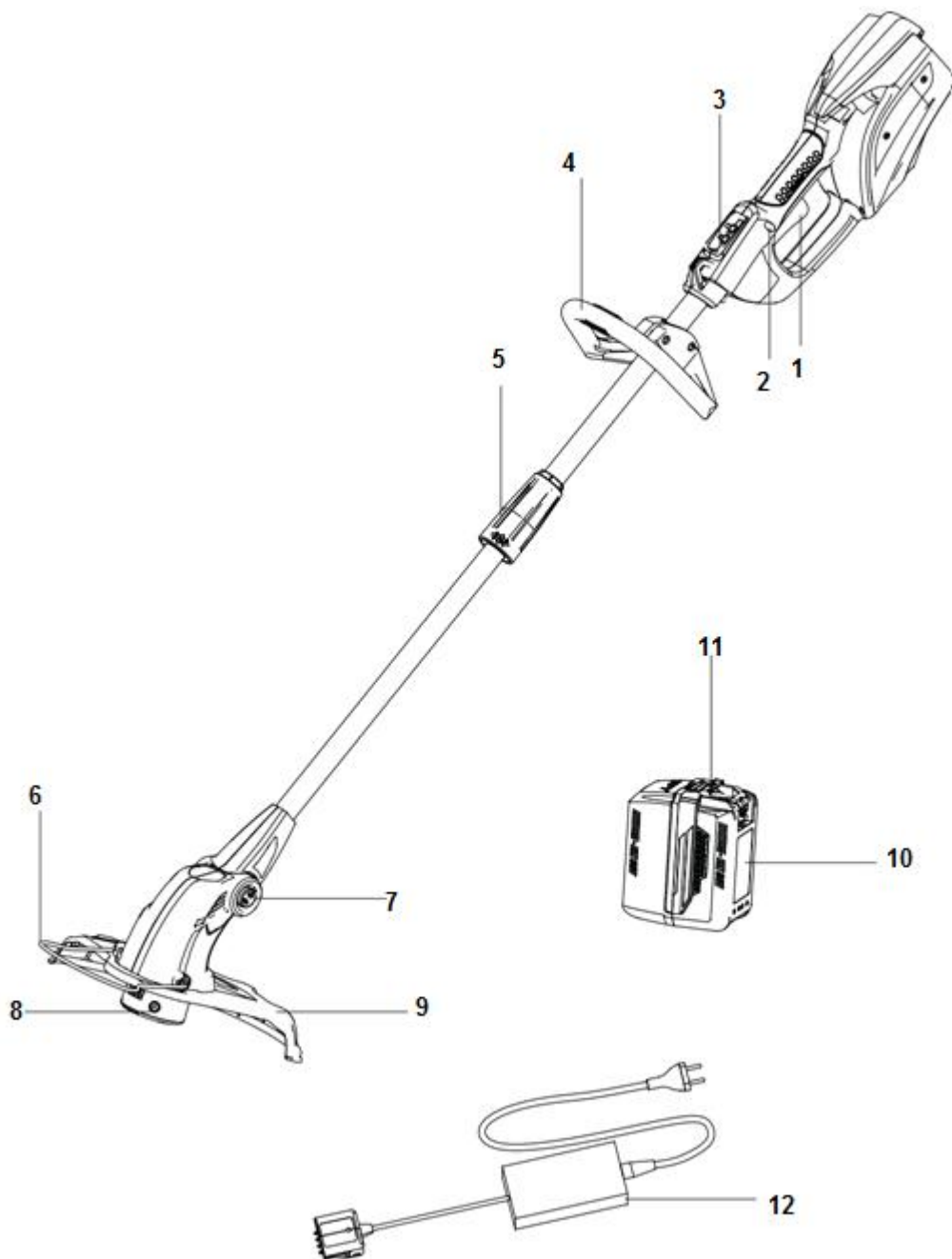
Note: The battery and charger were not included in pack





## DESCRIPTION

---



# ASSEMBLY

See the following drawings for assembly. Do not install the battery during the assembly. Wear protective equipment as described in Fig 1.

Fig 1: protective equipment

Fig 2: assembly of the carter of protection

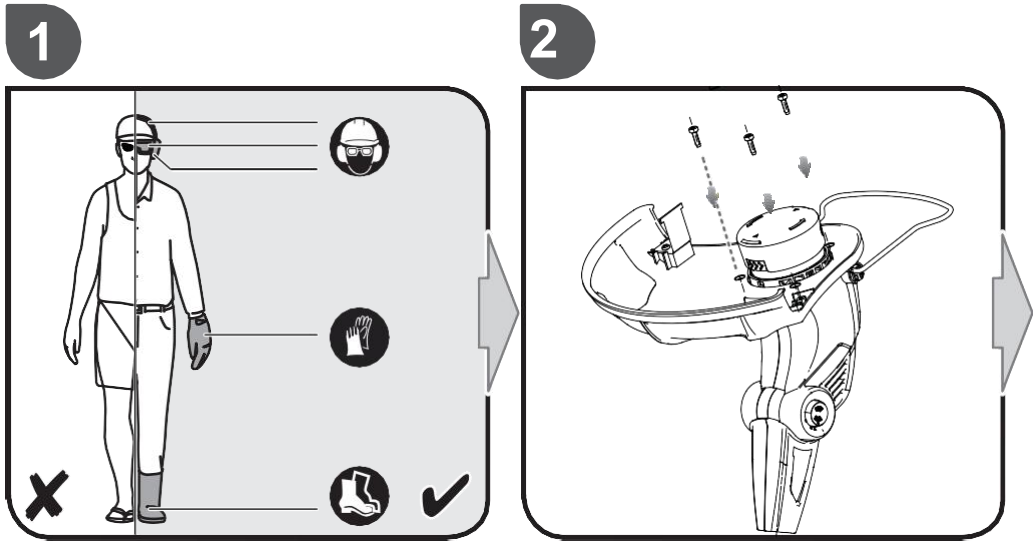


Fig 3: Assembly of the handle

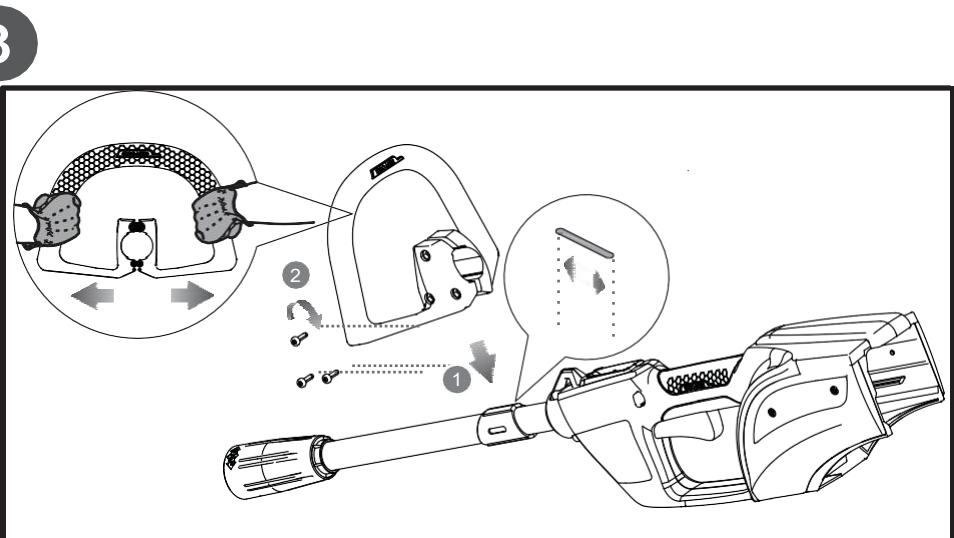


Fig 4: assembly of cutting bar in the tool

Fig 5: removing the adhesive from the cutting blade

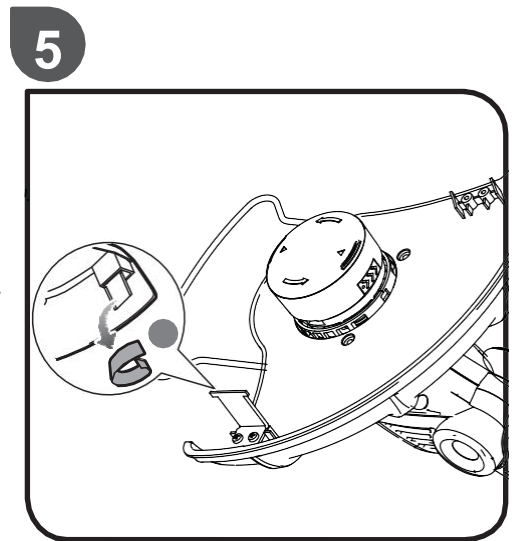
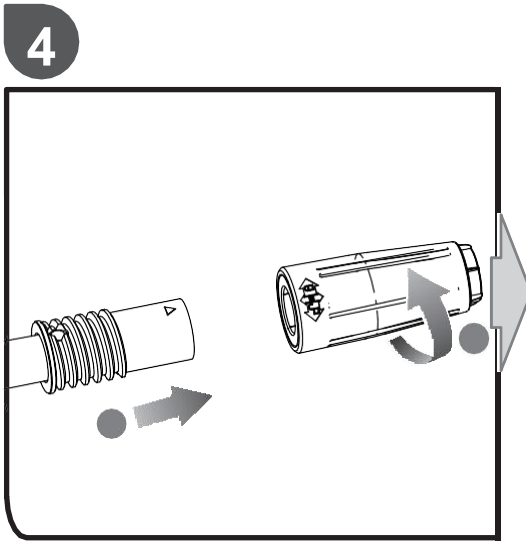
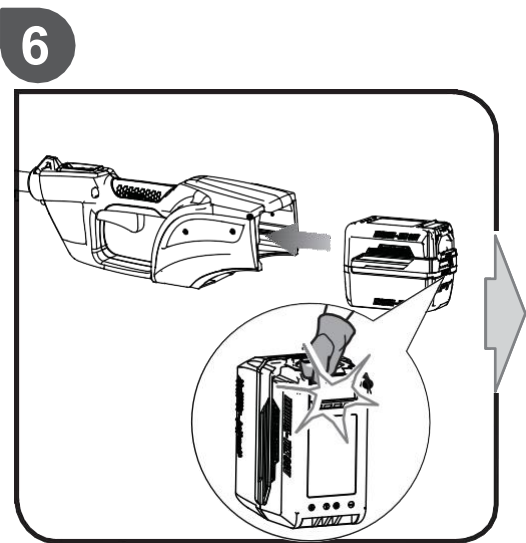


Fig 6: Installing the battery



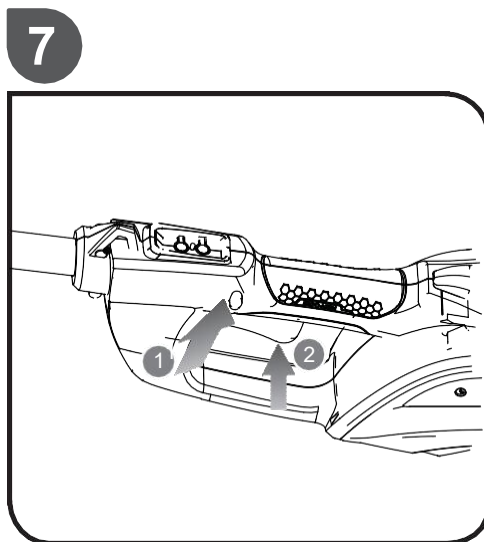


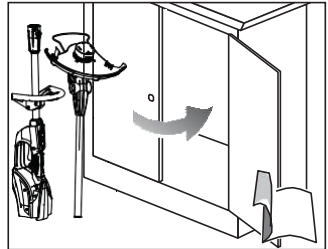
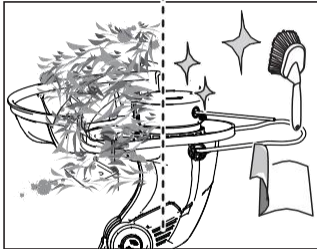
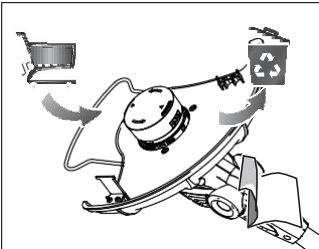
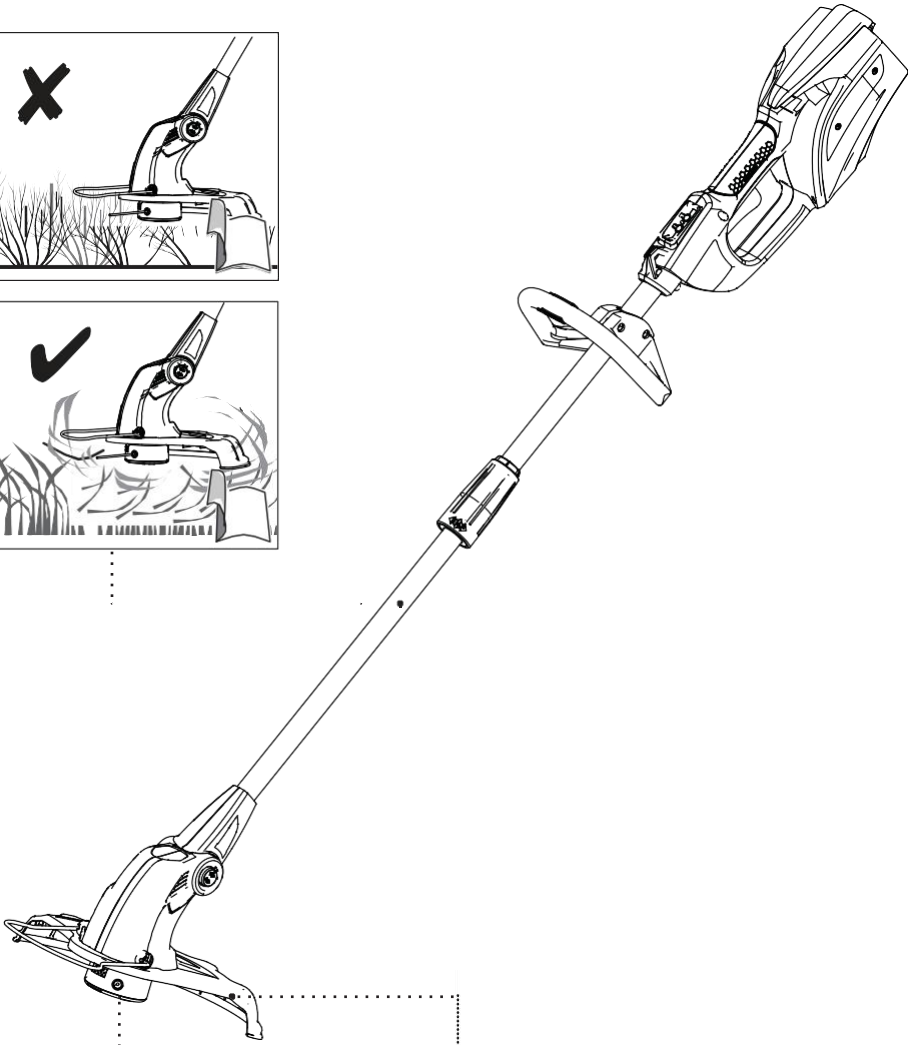
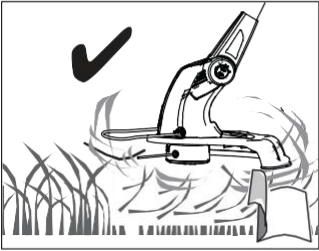
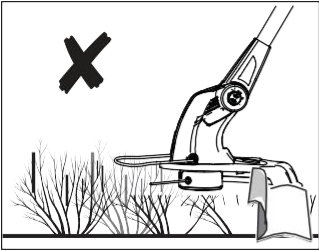


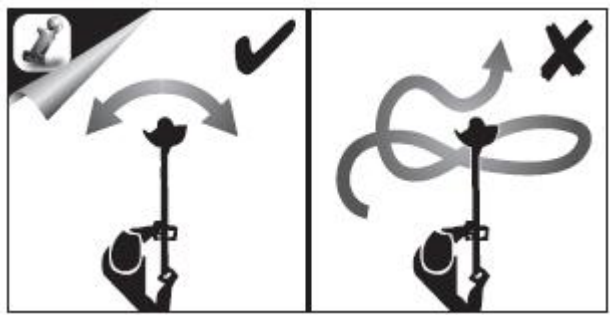
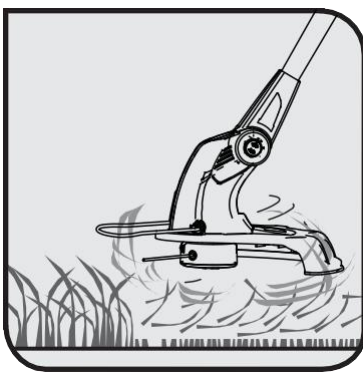
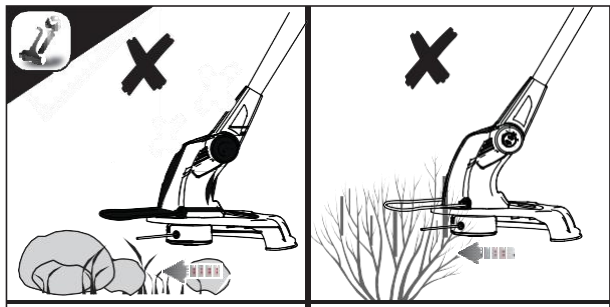
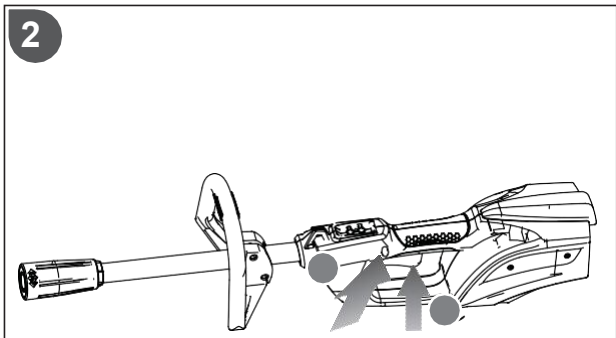
## USE

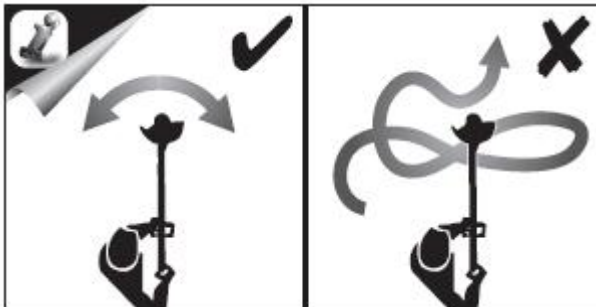
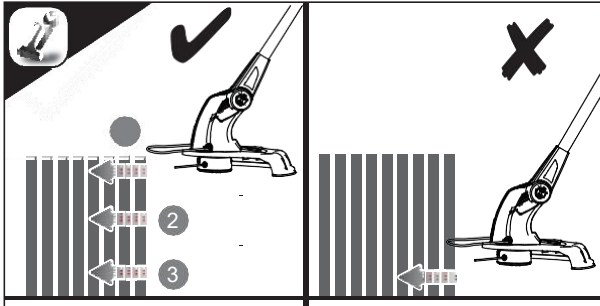
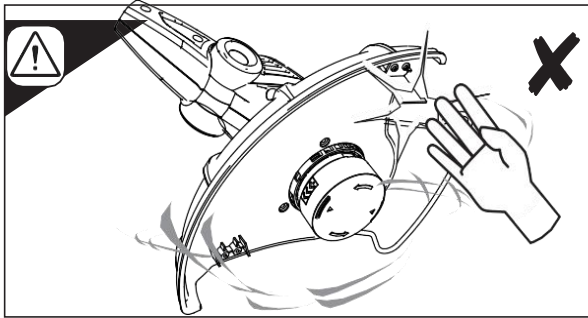
---

Fig 7: Switch on the tool



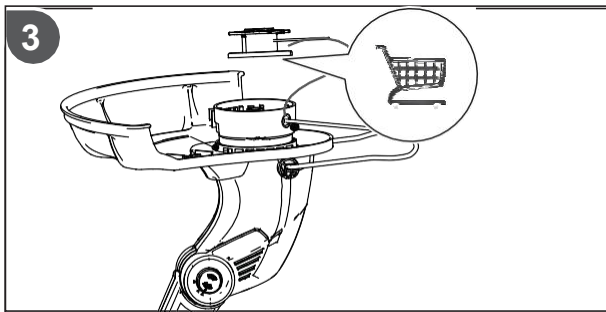
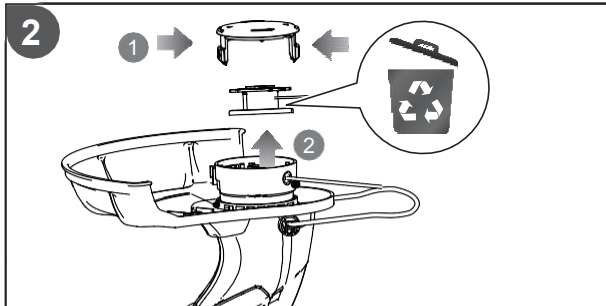
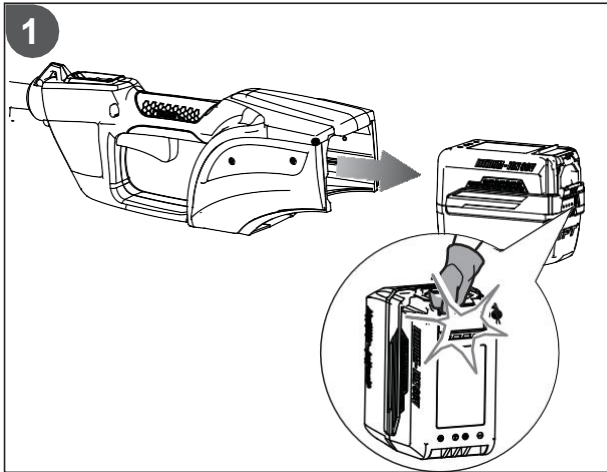
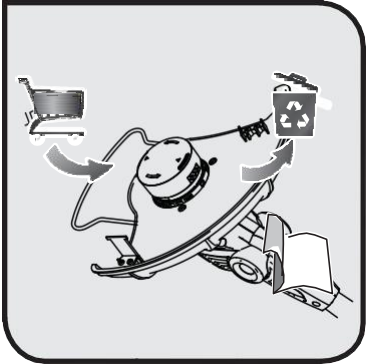






## Changing the cutting mean

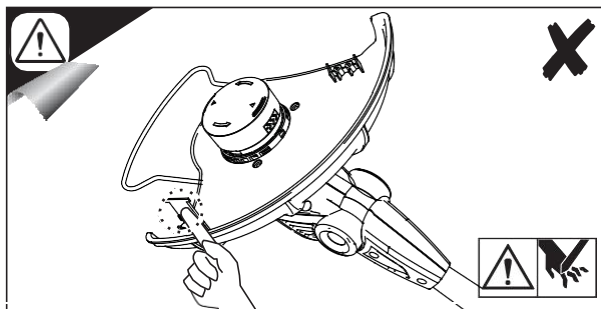
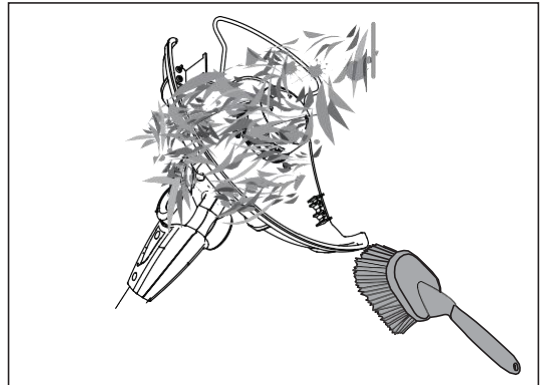
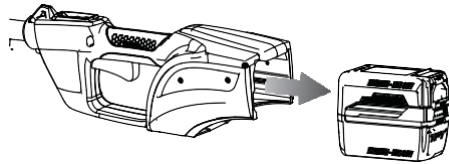
Always switch off the tool and remove the battery before changing the cutting mean.



## Cleaning

**WARNING** – there is danger of moving hazardous parts. Always switch off the tool and remove the battery before cleaning.

Clean the tool after each use. Follow the below figures. Check each time if there is any damage on the tool. In case of damage, do not use the tool and bring it to a service agent for inspection and repairs.

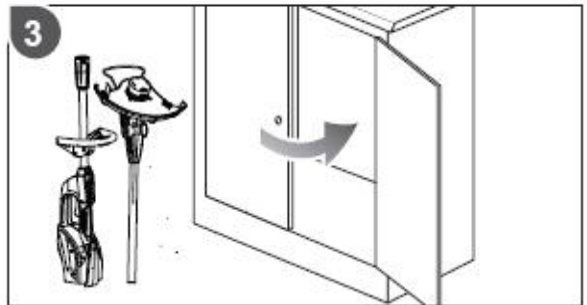
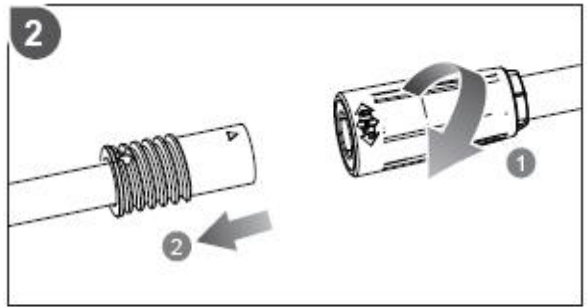
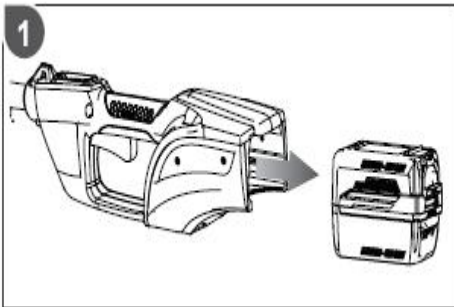
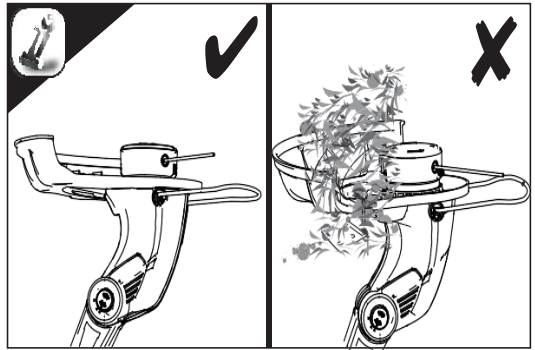
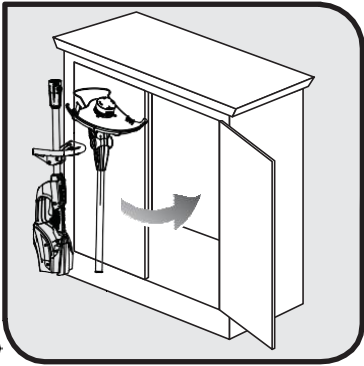


## Maintenance

No specific maintenance must be provided by the user. Each season; bring the tool to a service agent for inspection.

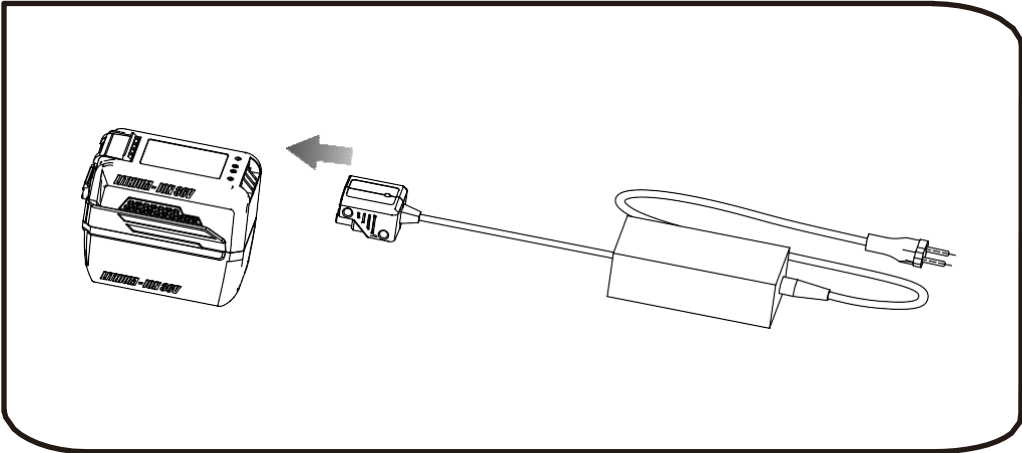
## Storage

Always clean the tool before storage. Switch off the tool and remove the battery and disassemble the tool. Store the tool out of reach of children.

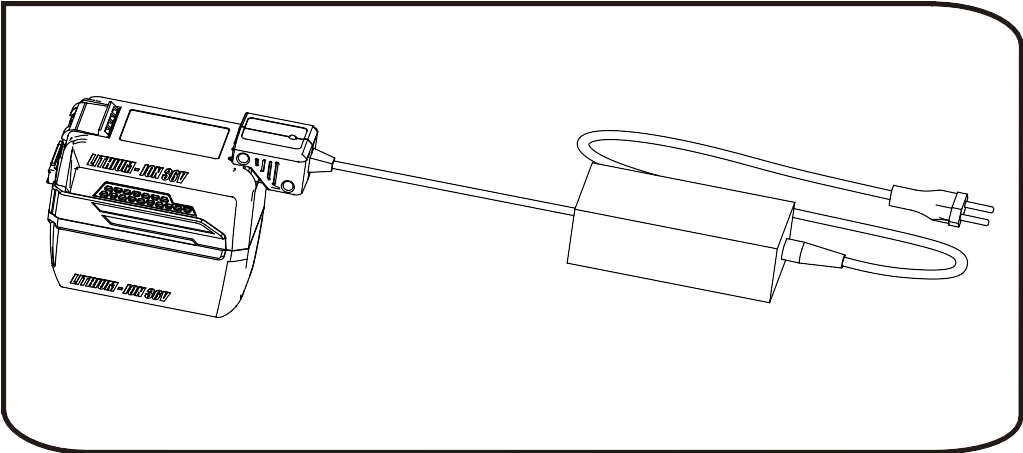


# Charging the battery

1



2







## PRODUCT SPECIFICATIONS

---

Voltage: 36V d.c.(Max. 40V)

No-load speed: 9000 min<sup>-1</sup>

Lawn trimmer Cutting capacity : 254/305 mm

Vibration level

**Lawn trimmer      3.5m/s<sup>2</sup>**

**Uncertainty      1.5m/s<sup>2</sup> <sup>2</sup>**

Noise emission level

A-weighted sound pressure  
level(Lawn trimmer)      82 dB(A) K= 2,5dB

A-weighted sound power  
level (Lawn trimmer)      96 dB(A)

Weight without battery pack: 2.8kg



## EC DECLARATION OF CONFORMITY

---



**BUILDER SAS**

ZI, 32, rue Aristide Bergès – 31270 Cugnaux - France  
Tel: +33 (0)5.34.502.502 Fax: +33 (0)5.34.502.503

Here with we declare that the product

Cordless Lawn Trimmer

HCBEN40V-A

Serial number: 20201134238-20201134587

Year of Construction: 2020

Is in conformity with the following European Directives and harmonized standards

2006/42/EC, 2014/30/EU, 2014/35/EU, (EU)2015/863 amending 2011/65/EU

EN 55014-1:2006+A1:2009+A2:2011, EN 55014-2:2015, EN 60335-

1:2012+A11:2014, EN 50636-2-91:2014,

Guaranteed sound power level: 96 dB (A)

Conformity assessment method to Annex VI Directive 2000/14/EC amended by  
2005/88/EC.

Responsible of technical file: Olivier Patriarca

Cugnaux, 22-09-2020

Philippe MARIE / PDG

# HYUNDAI

## WARRANTY

The manufacturer guarantees the product against defects in material and workmanship for a period of 2 years from the date of the original purchase. The warranty only applies if the product is for household use. The warranty does not cover breakdowns due to normal wear and tear.

The manufacturer agrees to replace parts identified as defective by the designated distributor. The manufacturer does not accept responsibility for the replacement of the machine, in whole or in part, and/or ensuing damage.

### The warranty does not cover breakdowns due to:

- insufficient maintenance.
- abnormal assembly, adjustment or operations of the product.
- parts subject to normal wear and tear.

### The warranty does not extend to:

- shipping and packaging costs.
- using the tool for a purpose other than that for which it was designed.
- the use and maintenance of the machine done in a manner not described in the user manual.

Due to our policy of continuous product improvement, we reserve the right to alter or change specifications without notice. Consequently, the product may be different from the information contained therein, but a modification will be undertaken without notice if it is recognized as an improvement of the preceding characteristic.

### READ THE MANUAL CAREFULLY BEFORE USING THE MACHINE.

When ordering spare parts, please indicate the part number or code, you can find this in the spare parts list in this manual. Keep the purchase receipt; without it, the warranty is invalid. To help you with your product, we invite you to contact us by phone or via our website:

- **+33 (0)9.70.75.30.30**
- **<https://services.swap-europe.com/contact>**

You must create a "ticket" via the web platform.

- Register or create your account.
- Indicate the reference of the tool.
- Choose the subject of your request.
- Describe your problem.
- Attach these files: invoice or sales receipt, photo of the identification plate (serial number), photo of the part you need (for example: pins on the transformer plug which are broken).



# PRODUCT FAILURE

## WHAT TO DO IF MY MACHINE BREAKS DOWN?

### If you bought your product in a store:

- a) Empty the fuel tank.
- b) Make sure that your machine is complete with all accessories supplied, and clean! If this is not the case, the repairer will refuse the machine.

Go to the store with the complete machine and with the receipt or invoice.

### If you bought your product on a website:

- a) Empty the fuel tank.
- b) Make sure that your machine is complete with all accessories supplied, and clean! If this is not the case, the repairer will refuse the machine.
- c) Create a SWAP-Europe service ticket on the site: <https://services.swap-europe.com> When making the request on SWAP-Europe, you must attach the invoice and the photo of the nameplate (serial number).
- d) Contact the repair station to make sure it is available before dropping off the machine.

Go to the repair station with the complete machine packed, accompanied by the purchase invoice and the station support sheet downloadable after the service request is completed on the SWAP-Europe site

For machines with engine failure from manufacturers BRIGGS & STRATTON, HONDA and RATO, please refer to the following instructions.

Repairs will be done by approved engine manufacturers of these manufacturers, see their site:

- <http://www.briggsandstratton.com/eu/fr>
- <http://www.honda-engines-eu.com/fr/service-network-page;jsessionid=5EE8456CF39CD572AA2AEEDFD290CDAE>
- <https://www.rato-europe.com/it/service-network>

**Please keep your original packaging to allow for after-sales service returns or pack your machine with a similar cardboard box of the same dimensions.**

**For any question concerning our after-sales service you can make a request on our website <https://services.swap-europe.com>**

**Our hotline remains available at +33 (9) 70 75 30 30.**



# WARRANTY EXCLUSIONS

## THE WARRANTY DOES NOT COVER:

- Start-up and setting up of the product.
- Damage resulting from normal wear and tear of the product.
- Damage resulting from improper use of the product.
- Damage resulting from assembly or start-up not in accordance with the user manual.
- Breakdowns related to carburetion beyond 90 days and fouling of carburetors.
- Periodic and standard maintenance events.
- Actions of modification and dismantling that directly void the warranty.
- Products whose original authentication marking (brand, serial number) has been degraded, altered or withdrawn.
- Replacement of consumables.
- The use of non-original parts.
- Breakage of parts following impacts or projections.
- Accessories breakdowns.
- Defects and their consequences linked to any external cause.
- Loss of components and loss due to insufficient screwing.
- Cutting components and any damage related to the loosening of parts.
- Overload or overheating.
- Poor power supply quality: faulty voltage, voltage error, etc.
- Damages resulting from the deprivation of enjoyment of the product during the time necessary for repairs and more generally the costs related to the immobilization of the product.
- The costs of a second opinion established by a third party following an estimate by a SWAP-Europe repair station
- The use of a product which would show a defect or a breakage which was not the subject of an immediate report and/or repair with the services of SWAP-Europe.
- Deterioration linked to transport and storage\*.
- Launchers beyond 90 days.
- Oil, petrol, grease.
- Damages related to the use of non-compliant fuels or lubricants.

\* In accordance with transport legislation, damage related to transport must be declared to carriers within 48 hours maximum after observation by registered letter with acknowledgement of receipt.

This document is a supplement to your notice, a non-exhaustive list.

**Attention:** all orders must be checked in the presence of the delivery person. In case of refusal by the delivery person, it you must simply refuse the delivery and notify your refusal.

**Reminder:** the reserves do not exclude the notification by registered letter with acknowledgement within 72 hours.

### Information:

Thermal devices must be wintered each season (service available on the SWAP-Europe site). Batteries must be charged before being stored.

**HYUNDAI**  
POWER PRODUCTS

**For Inquiries, please contact:**

BUILDER SAS

32, rue Aristide Bergès Z1 31270 Cugnaux, France

Tél. : +33 (0) 5.34.502.502 Fax : +33 (0) 5.34.502.503

<http://www.hyundai-power-fr.com/>

Fabriqué en République Populaire de Chine (PRC)